

BlueSpot[®]

HOLESAW SET

User Manual



20505 / 20507 / 20509

General Information

Thank you for purchasing a BlueSpot product, you can find further information on our range at **www.BlueSpot.uk.com**. Please ensure that you are using the product correctly and that all guidance and cautions are followed in accordance with the instructions. Please retain these instructions for future reference.

Safe use

Please make sure that you read these instructions carefully in order to avoid injury when using the holesaw set. Follow all health and safety rules and regulations. If in doubt and available please contact a more knowledgeable source.

DO NOT use if damaged.

- **ALWAYS** ensure the holesaws have been checked for any damage before use. Any damage found needs to be repaired or replaced before use to prevent damage to property or personal injury.
- **ALWAYS** ensure the drill has been checked for any damage before use. Any damage found needs to be repaired or replaced before use to prevent damage to property or personal injury.
- **ALWAYS** ensure that operators are fully comfortable operating the holesaw set and understand all of the safety precautions before beginning.
- **ALWAYS** make sure the holesaw has been attached to the drill correctly and there is a secure connection before beginning.
- **ALWAYS** ensure the drill is unplugged and not in use when changing the holesaws.
- **ALWAYS** dress appropriately – clothing should be close fitted and long hair tied back. Jewellery should be removed and shoes should be worn with a non-slip sole.
- **ALWAYS** wear the correct eye or face protection when operating the holesaw set.
- **ALWAYS** wear approved work gloves when operating the holesaw.
- **ALWAYS** wear approved respiratory protection. This will help protect you from any dust.
- **ALWAYS** ensure you work in a well ventilated room.
- Maintain tool in good and clean condition for best and safest performance.
- Keep the work area clean, uncluttered and ensure there is adequate lighting.
- Keep children and unauthorised persons away from the work area.
- **ALWAYS** ensure the correct size arbor is used for the holesaw.
- **BE AWARE** that the set contains sharp blades. Keep away from children at all times.

Safe Use (continued)

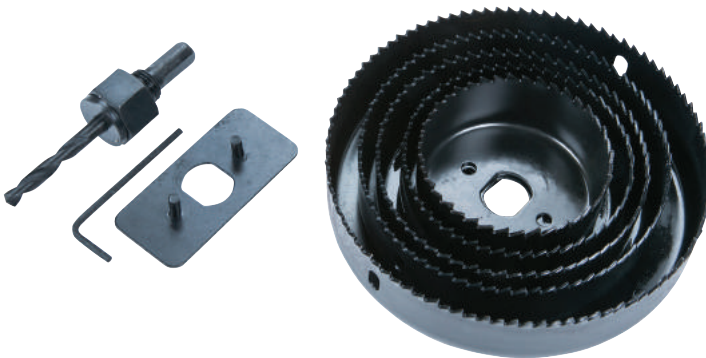
- **BE AWARE** not to use too much pressure when using the holesaw.
- **NEVER** leave the holesaw set unattended. When you have finished using the holesaw set it should be stored away in a safe place that is out of reach of children.
- **NEVER** try to get the holesaw set to perform a task that it was not made for. Do not overload or misuse the tool.
- **NEVER** operate the tool if you are under the influence of drugs or alcohol as this is dangerous.
- **DO NOT** operate the holesaw if you are tired as this is dangerous.
- If the holesaw set is damaged do not use.

Introduction

20505 - BlueSpot 8 PCE Holesaw Set (64 - 127mm)

The BlueSpot 8 Piece 6mm - 127mm Holesaw Set is ideal for plasterboard, plastic and wood. Manufactured from heat-treated carbon steel for increased durability and cutting power. Includes handy carrying case for quick and convenient storage. Includes arbor, hex key and reinforcing plate.

Package contents - 64, 76, 89, 102 & 127mm. Hex key. Arbor. Reinforcing plate.



Introduction (continued)

20507 - BlueSpot 11 PCE Holesaw Set (19 - 64mm)

The BlueSpot 11 Piece 19mm - 64mm Holesaw Set is ideal for plasterboard, plastic and wood. Manufactured from heat-treated carbon steel for increased durability and cutting power. Includes handy carrying case for quick and convenient storage. Includes hex key and arbors.

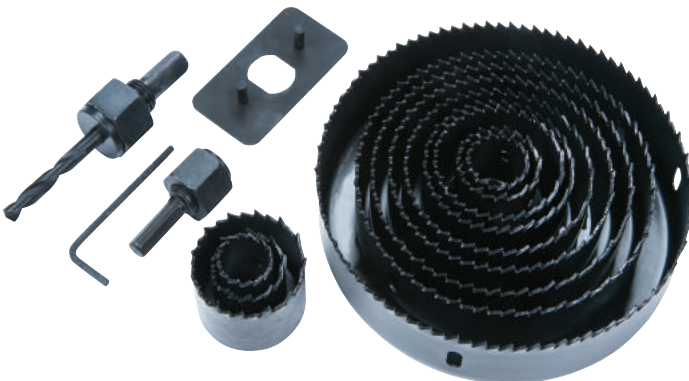
Package contents - 19, 22, 29, 32, 38, 44, 51 & 64mm. Arbor (x2). Hex key.



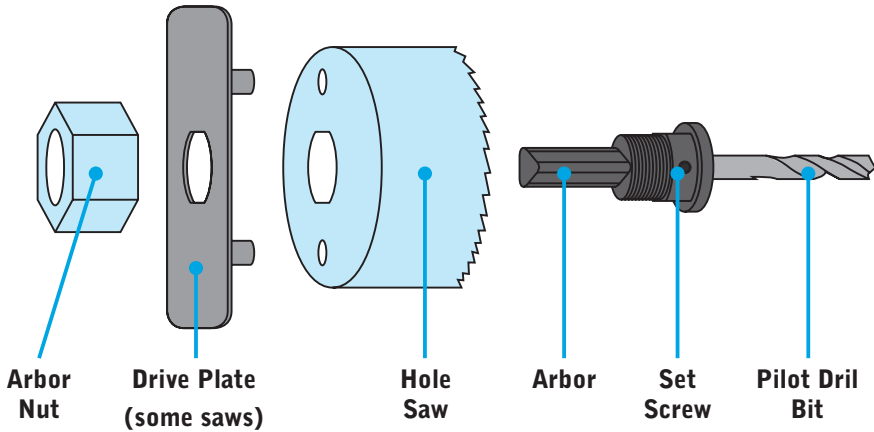
20509 - BlueSpot 16 PCE Holesaw Set (19 - 127mm)

The BlueSpot 16 Piece 19mm - 127mm Holesaw Set is ideal for plasterboard, plastic and wood. Manufactured from heat-treated carbon steel for increased durability and cutting power. Includes handy carrying case for quick and convenient storage. Includes hex key and arbors.

Package contents - 19, 21, 25, 32, 38, 44, 51, 64, 76, 89, 102 & 127mm. Hex key. Arbor (x2). Reinforcing plate.



Parts Diagram



Operation

ALWAYS ensure that operators are fully comfortable operating the holesaw set and understand all of the safety precautions before beginning.

ALWAYS ensure the drill is not connected to a power source and is fully switched off before attaching the holesaw to the drill.

ALWAYS ensure you have checked and are aware of whether there are any wires or pipes behind where you are drilling.

Note – We always recommend testing this first on a test piece of material until you become comfortable operating the holesaw set.

How to attach a holesaw to a drill

1. Choose the holesaw that has the diameter needed for the hole that you would like to cut.
2. Refer to the parts diagram above and check the fit of the arbor with the holesaw. In some holesaw sets there will be a large and small arbor, choose the one that fits to the holesaw you have selected.

Operation (continued)

3. Unthread the arbor nut from the arbor.
4. If the pilot drill bit is on the opposite arbor that you need to use, it can be moved by doing the following –
 - Remove both of the arbor nuts on the arbor and place to one side.
 - Use the hex key to loosen the set screw with the bit.
 - The pilot drill bit will now be able to be safely removed.
 - Insert the pilot drill into the arbor that you want to use.
 - Secure the bit by tightening the set screw.
5. With some holesaw sets the holesaw has three holes at the back. With these a drive plate will have been provided in the set. This will need to be used on the back of the holesaw to provide a secure connection.
6. Insert the arbor through the centre of the holesaw and drive plate (if used). Then secure in place using the mandrel nut.

ALWAYS ensure that there is a tight and secure connection between the holesaw and the arbor. If there is not a secure connection the wrong arbor may have been used. Follow the steps above again, changing the arbor and ensuring there is a secure fit before continuing.
7. On your drill open the jaws of the drill chuck.
8. Insert the arbor into the drill chuck.

ALWAYS ensure that the drill chuck has been tightened and that there is a secure connection before operation.

How to use the holesaw set

1. Mark the centre of the hole that you would like to cut. Drill a pilot hole completely through the workpiece.
2. Align the holesaw on the centre of the workpiece with the pilot hole you have just drilled. The drill should be held at 90°.
3. Pull the trigger on the drill and make contact with the workpiece, pressing straight in.
4. Start slowly and increase the speed of the drill when a circle groove has been made in the workpiece, pushing the drill in with moderate pressure.
5. When the hole has been cut release the trigger on the drill.

ALWAYS ensure the drill has come to a complete stop before it is removed from the workpiece.
6. When complete remove the holesaw from the drills chuck.

Cleaning & Maintenance

Clean the holesaw sets with a dry cloth if needed.

Storage

ALWAYS ensure the downlight installation kit is stored out of reach of children.

Store the tool in a secure, dry place.

Disposal

Always check and adhere to national regulations when disposing of any tools that are no longer functional and cannot be repaired.

- Contact your local waste disposal authority for information on how to correctly dispose of tools.

Environmental Protection

Recycle unwanted materials instead of disposing of them as waste. All tools, accessories and packaging should be sorted, taken to a recycling centre and disposed of in a manner which is compatible with the environment. When the product becomes completely unserviceable and requires disposal, drain any fluids (if applicable) into approved containers and dispose of the product and fluids according to local regulations.



Contact

Find out more about the BlueSpot® products at **www.BlueSpot.uk.com**

Tel: 0800 093 0115

Email: sales@bluespot.uk.com

Orme Business Centre,
Greenacres Road,
Oldham,
OL4 3NS

Notes

This image shows a single sheet of white paper with horizontal blue ruling lines. The lines are evenly spaced and run across the width of the page. There are no margins, text, or other markings on the paper.