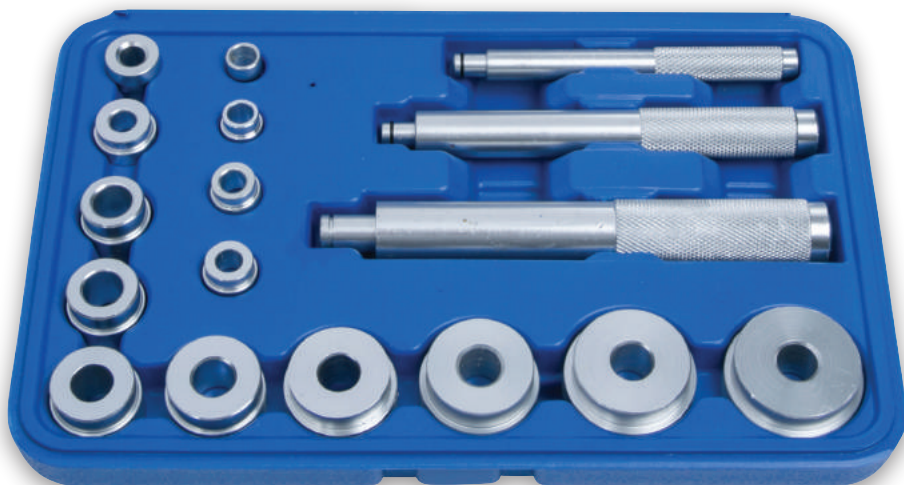


17 PCE BEARING RACE AND SEAL DRIVER KIT

User Manual



07901

General Information

Thank you for purchasing a BlueSpot product, you can find further information on our range at **www.BlueSpot.uk.com**. Please ensure that you are using the product correctly and that all guidance and cautions are followed in accordance with the instructions. Please retain these instructions for future reference.

Safe use

Please make sure that you read these instructions carefully in order to avoid injury when using the bearing race and seal driver kit. Follow all health and safety rules and regulations. If in doubt and available please contact a more knowledgeable source.

DO NOT use if damaged.

- Maintain tool in good and clean condition for best and safest performance.
- Keep the work area clean, uncluttered and ensure there is adequate lighting.
- Maintain correct balance and footing. Ensure the floor is not slippery and wear non-slip shoes.
- Keep children and unauthorised persons away from the work area.
- If any of the parts within the bearing race and seal driver kit are damaged do not use.
- **ALWAYS** ensure you have read the instructions fully and feel confident in how to use the tool before beginning.
- **ALWAYS** dress appropriately – clothing should be close fitted and long hair tied back. Jewellery should be removed.
- **ALWAYS** wear the correct eye protection when operating.
- **ALWAYS** strike the driver directly on the centre of the head.
- **NEVER** hit the tool at an angle or off centre. This can be dangerous and cause damage to property or injury.
- **NEVER** strike the side of the driver body.
- **ALWAYS** ensure you are aware of the limitations of the driver you are using. If you do not know the limitations check with the driver manufacturer before using and familiarise yourself.
- **ALWAYS** check for damaged or worn parts before beginning. If damage is found, replace before beginning. Damaged parts may be dangerous and could cause injury.
- **ALWAYS** check the driver before use to check for any damage. If damage is found, replace before beginning. Damaged parts may be dangerous and could cause injury.
- **NEVER** use any parts of the bearing race and seal driver kit to perform a task that they

Safe use (continued)

were not designed for. Do not overload or misuse the tool.

- **NEVER** operate the tool if you are under the influence of drugs or alcohol as this is dangerous.
- When you have completed the task intended always ensure the kit is stored away in its original box and that is out of reach of children.

Introduction

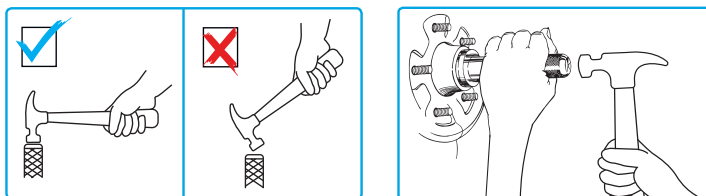
The BlueSpot 17 PCE Bearing Race and Seal Driver Kit is suitable for the installation of straight races and seals into brake disc hubs without damage to the bearing or axle housing. The collars will fit most standard wheel bearing sizes, including 4x4 vehicles and are made from machined aluminium. The kit comes in a handy carrying case for quick and easy storage. There are three driver sizes are used with a small hammer to insert the new straight race into the brake disc hub. The adaptor should sit snugly within the race with minimal movement to avoid any damage to the axle housing. The seal can then be installed once the bearing placed within the race with the same sized adaptor and hammer.

Contains: 3 PCE Drivers Ø10.3mm, 15.4mm & 20.4mm I/D 10mm O/D 12mm, I/D 12mm O/D 14mm, I/D 14mm O/D 16mm, I/D 15mm O/D 17mm, I/D 16mm O/D 18mm, I/D 18mm O/D 20mm, I/D 20mm O/D 22mm, I/D 22mm O/D 24mm, I/D 25mm O/D 27mm, I/D 28mm O/D 30mm, I/D 30mm O/D 34mm, I/D 32mm O/D 36mm, I/D 35mm O/D 40mm, I/D 38mm O/D 42mm.

Operation

Choose the correct adaptor before beginning by choosing the one that is slightly smaller than the diameter or the seal/bearing.

1. Select the correct adaptor and attach it securely on the handle/mandrel.
2. Align the adaptor against the seal/bearing assembly.
3. Place the adaptor against the seal/bearing race.
4. With your hammer tap the driver handle to force it into place.



Cleaning & Maintenance

To clean just use a dry cloth to wipe over the tool parts.

Storage

ALWAYS ensure the tools are stored out of reach of children.

Store the tool in a secure, dry place.

Disposal

Always check and adhere to national regulations when disposing of any tools that are no longer functional and cannot be repaired.

- Contact your local waste disposal authority for information on how to correctly dispose of tools.

Environmental Protection

Recycle unwanted materials instead of disposing of them as waste. All tools, accessories and packaging should be sorted, taken to a recycling centre and disposed of in a manner which is compatible with the environment. When the product becomes completely unserviceable and requires disposal, drain any fluids (if applicable) into approved containers and dispose of the product and fluids according to local regulations.



Contact

Find out more about the BlueSpot® Lifetime Guarantee at **www.BlueSpot.uk.com**

Tel: 0800 093 0115

Email: sales@bluespot.uk.com

Orme Business Centre,

Greenacres Road,

Oldham,

OL4 3NS